

STIP Project List

**STIP #** 1763070    **TDOT PIN #** 101463.05    **LENGTH IN MILES** 3.0    **LEAD AGENCY** TDOT  
**COUNTY** MONTGOMERY    **TOTAL PROJECT COST** \$35,726,400  
**ROUTE** SR-149    **TIP #** 4  
**TERMINI** FROM RIVER ROAD TO SR-13; SR-13, SR-149 TO ZINC PLANT ROAD  
**PROJECT DESCRIPTION** WIDEN FROM 2-LN TO 5-LN CURB & GUTTER SECTION  
**REMARKS**



COUNTY MAP

**OLD PAGE**

| FY   | PHASE | FUNDING | TOTAL FUNDS | FED FUNDS  | STATE FUNDS | LOCAL FUNDS |
|------|-------|---------|-------------|------------|-------------|-------------|
| 2017 | CONST | STBG    | 27,200,000  | 21,760,000 | 5,440,000   |             |



VICINITY MAP

ALL SCHEDULES SUBJECT TO AVAILABILITY OF FUNDS

STIP Project List

**STIP #** 1763070   
 **TDOT PIN #** 101463.05   
 **LENGTH IN MILES** 3.1   
 **LEAD AGENCY** TDOT  
**COUNTY** MONTGOMERY   
 **TOTAL PROJECT COST** \$35,726,400  
**ROUTE** SR-149   
 **TIP #** 4  
**TERMINI** FROM RIVER ROAD TO SR-13; SR-13, SR-149 TO ZINC PLANT ROAD  
**PROJECT DESCRIPTION** WIDEN FROM 2-LN TO 5-LN CURB & GUTTER SECTION  
**REMARKS** The SR-149 change is for transitioning existing pavement and markings and the SR-13 change is for installing steel signal strain poles.

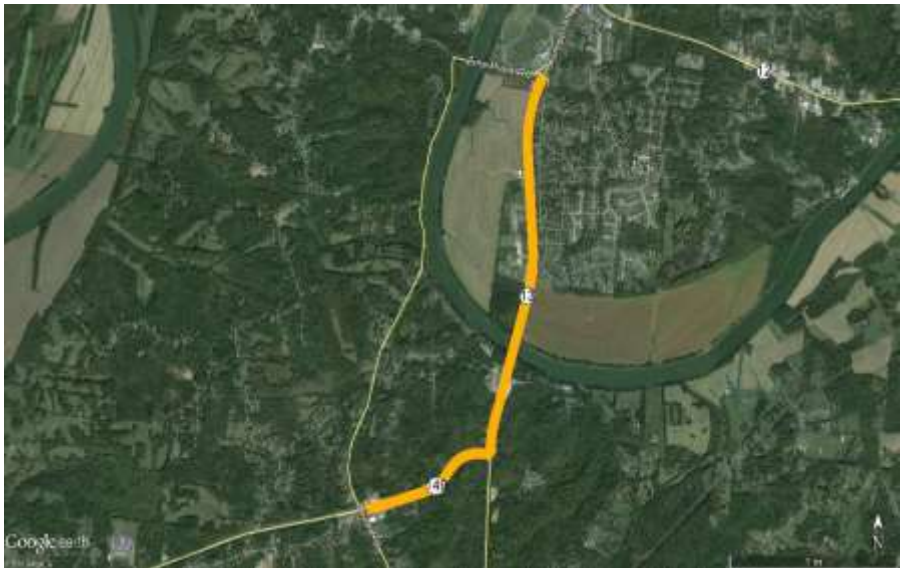


COUNTY MAP

ADJUSTED PAGE

Adjustment Number 51

| FY   | PHASE | FUNDING | TOTAL FUNDS | FED FUNDS  | STATE FUNDS | LOCAL FUNDS |
|------|-------|---------|-------------|------------|-------------|-------------|
| 2017 | CONST | STBG    | 27,200,000  | 21,760,000 | 5,440,000   |             |



VICINITY MAP

ALL SCHEDULES SUBJECT TO AVAILABILITY OF FUNDS